

Trusted herbal care for piles...



PYNIL™

OINTMENT



Enriched with balanced formula

30 gm Eco Pack With FREE Applicator inside.



or the use of regd. Medical practitioner only

PYNIL™

OINTMENT



Our offered medicine capsules with ointment



The major symptoms of piles are Irritation or pain at passing stool, bleeding, painful swelling, lump around the rectal region and Chronic Constipation. Our offered medicines are highly effective in curing piles. The capsules and ointments are herbal and ayurvedic. Formulated from some of the beneficial herbal extracts, the medicines help in controlling bleeding, itching piles, fissures and diverse hemorrhoids. The anti piles medicines also help in reducing the inflammatory and laxative action. We deal with **PYNIL** branded medicines for curing piles.

For the use of regd. Medical practitioner only

Key Contains @ Usages



Nimbu Chhal : Useful For Constipation And Protect Liver



Vacha : Sedative, Laxative, And Carminative



Aritha Bhasma : Useful For Bleeding And Piles



Bhrung Raj : Cooling Agent And Stops Itching

Key Contains @ Usages



Tankan : Is A Diuretic, Emmenagogue, Astringent, & Antiseptic.



Indarjav Seeds : Remove Krumi



Pitta Papdo : Remove Masa



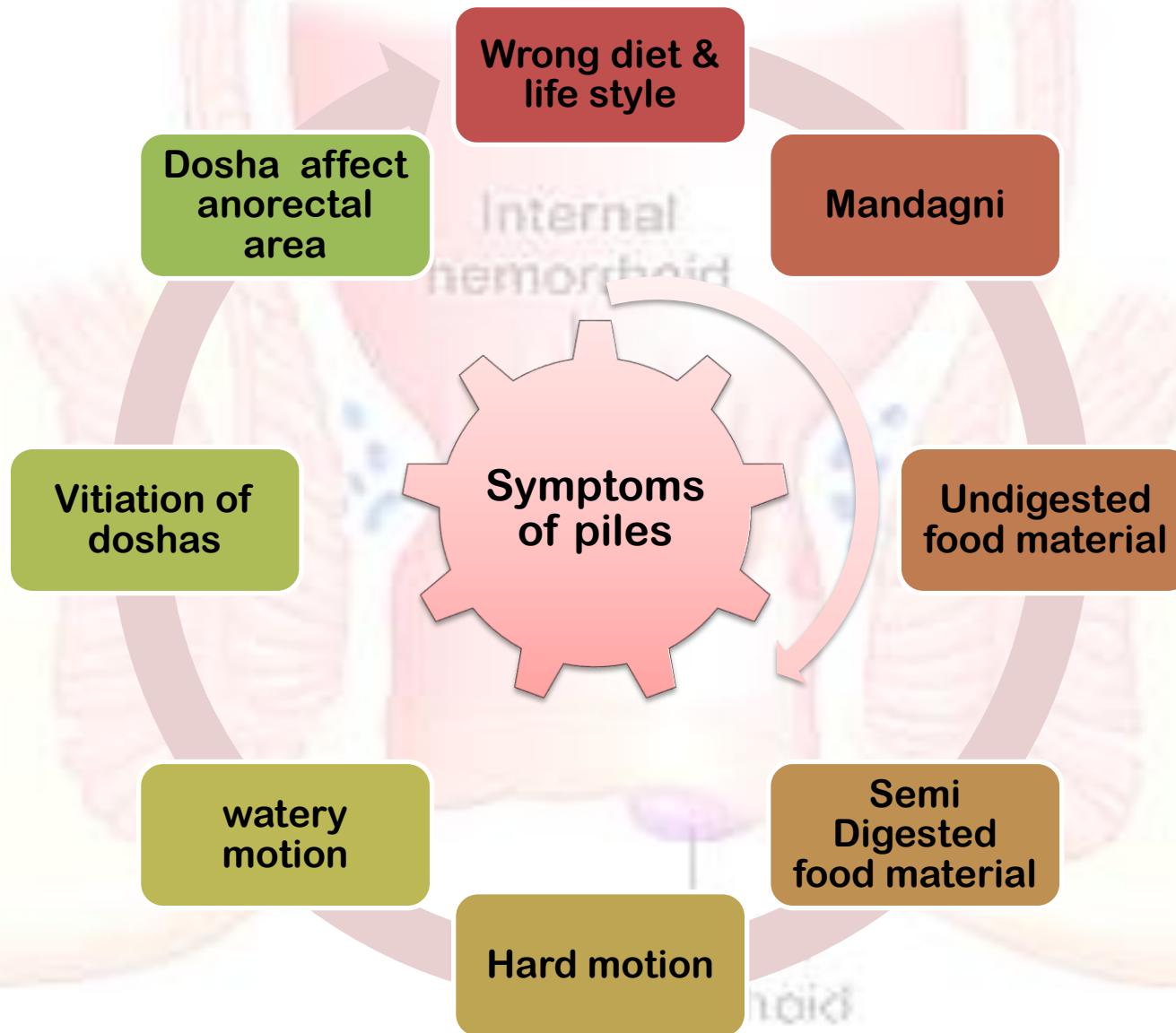
Haritaki : Laxative Herb

CONTAIN ...

❖ Ext. of

- Haritaki (Terminalia Chebula) 5.000 % A.B,
- Nirgudi Oil (Vitex Nirgundo) 3.000 % A.B.,
- Nimbu Crystal (Citrus Acida) 1.000 % A.B,
- Vacha Mool (Acorus Calamus) 3.000 % A.B.,
- Bhrungraj Panchang (Eclipta Alba) 2.000 % A.B.,
- Inderjav Seeds (Holorrhena Antidysenteri) 1.000 % A.B.,
- Pittpapdo Seeds (Fumaria Parviflora) 2.000 % A.B.
- Powder of Kapoor Crystal (Cinnamomum Camphora) 1.225 % A.B,
- Yashad Bhasma 1.000 % A.B,
- Tankan 1.000 % A.B.,
- Aritha Bhasma 0.500 % A.B.,
- Sphtik Bhasma 0.500 % A.B.

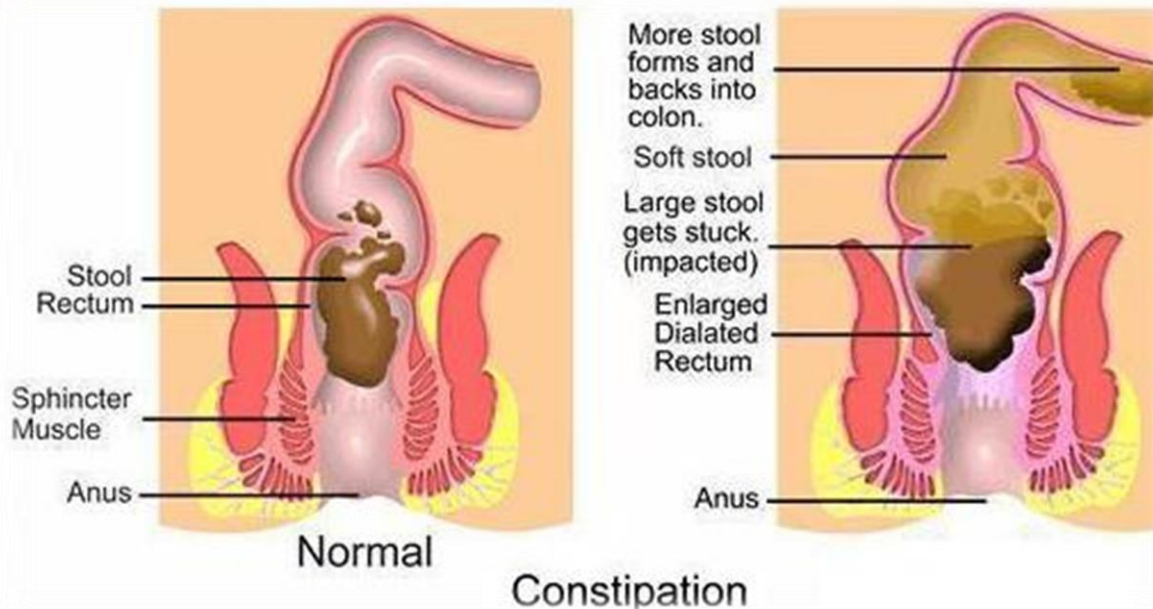
Piles & Ayurveda



What is piles ?

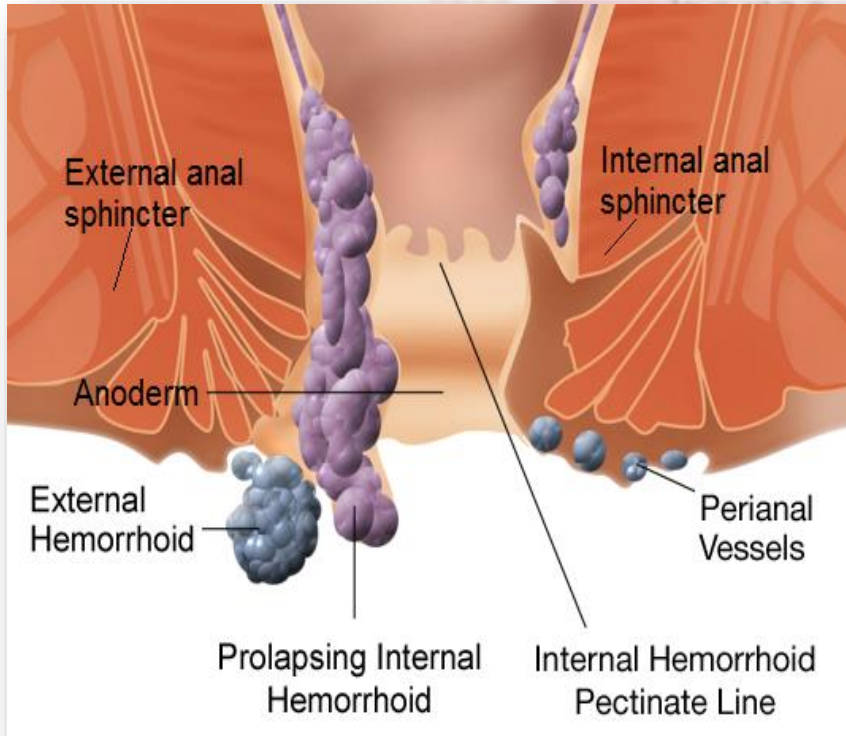
Piles Are Hemorrhoids That Become Inflamed. Hemorrhoids Are Masses, Clumps, Cushions Of Tissue In The Anal Canal - They Are Full Of Blood Vessels, Support Tissue, Muscle And Elastic Fibers.

Although Hemorrhoids Are Thought Of As Unpleasant Inflammations, We All Have Them. It Is When The Hemorrhoidal Cushions Become Too Big (Inflamed) That Problems Occur - When This Happens They Are Called Piles Or Pathological Hemorrhoids.



What Are Piles?

Piles can be of various sizes and may be internal (inside the anus) or external ones (outside the anus). Typically, internal piles occur from 2 to 4cm above the opening of the anus. External piles (perianal hematoma) occur on the outside edge of the anus. The internal ones are much more common.



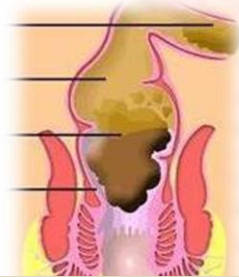
symptomatic hemorrhoids affect at least half the population at some time in their lives before the age of 50.

In the majority of cases, piles are effectively treated with over-the-counter medications, a good fluid intake, and by following a diet high in fiber. In severe cases, the piles may have to be surgically removed. About 10% of patients who go and see their doctor about piles eventually require surgical intervention.

Why Do Piles Occur?

The Blood Vessels Around The Anus And In The Rectum Will Stretch Under Pressure And May Swell Or Bulge. Inflamed Veins (Hemorrhoids) Can Develop When Pressure Increases In The Lower Rectum.

This May Be Due To



Chronic Constipation



Lifting Heavy Weights

Pregnancy



Chronic Diarrhea



Straining When Passing A Stool

- Here Are Some Key Points About Piles. More Detail And Supporting Information Is In The Main Article.
- ❑ Piles Are Hemorrhoids That Become Inflamed.
- ❑ The Size Of Piles Can Vary And Are Found Inside Or Outside The Anus.
- ❑ Half The Us Population Are Affected By Piles, Usually Before The Age Of 50.
- ❑ Around **10% Of Patients** Who Go And See Their Doctor About Piles, Require Surgical Treatment.
- ❑ Piles Are Often Not Serious And Go Away On Their Own.
- ❑ Internal Hemorrhoids Are Ordered Into Four Grades.
- ❑ External Hemorrhoids Are Called Perianal Hematoma.
- Piles Occur Due To Chronic [Constipation](#), Chronic [Diarrhea](#), Lifting Heavy Weights, Pregnancy Or Straining When Passing A Stool

The ointment from PYNIL is highly effective in curing piles. Formulated from natural herbal extracts and oils under utmost hygienic conditions, the ointment is very safe to use. It has no side effect on the skin. On its first use only, it shows instant Relief from the irritation, itching and swelling caused at passing stool.

Usage: It instantly show Relief from Irritation caused at passing stool, bleeding, painful swelling, lump around the rectal region and Chronic Constipation.

Recommended Dosage: Gently massage a little amount of ointment on the affected part three times a day or as per directions given by physician.

Indications: The anti piles ointments from PYNIL are best for

Rakta Piles

Vataja Piles

Pittaja Piles

Heamorrhods

Congential Piles

Purpose : The anti piles ointments are widely used for curing the irritation caused due to piles.

- 100% herbal in nature
- Safe Ayurvedic proprietary medicine
- No side effect on the skin
- Along with an effective treatment to relieve your symptoms, there are a few other easy steps you can take to make yourself more comfortable:
- Wash your bottom with unperfumed soap after each bowel movement. Then dry off thoroughly by gently patting with a soft towel.
- Wear loose, cotton underwear instead of synthetic fibres to keep the area as dry as possible.
- Avoid using talcum powder.
- In most cases, your symptoms will clear up within a week or two. And by making a [few small changes to your lifestyle](#) , you can minimize the chance they'll come back to the same degree, if at all.
- With any medication, always make sure you read the label and follow the instructions carefully.

Precautions : The above information on this page is not intended to be a substitute for professional medical advice. Do not use this information to self diagnose without consulting your doctor.

Ask Following To Check Piles

- Do Any Close Relatives (Parents, Siblings) Have Piles?
- Has There Been Any Blood On The Stools?
- Has There Been Any Mucus On The Stools?
- Has There Been Any Recent Weight Loss?
- Have Bowel Movements Changed Recently?
- What Color Are The Stools?

What are the signs and symptoms of piles ?

In Most Cases Piles Are Not Serious And Go Away On Their Own After A Few Days.

An Individual With Piles May Experience The Following Symptoms

- **A Hard Lump May Be Felt Around The Anus. It Consists Of Coagulated Blood, Called A Thrombosed External Hemorrhoid. This Can Be Painful**
- **After Going To The Toilet, A Feeling That The Bowels Are Still Full**
- **Bright Red Blood After A Bowel Movement**
- **Itchiness Around The Anus**
- **Mucus Discharge When Emptying The Bowels**
- **Pain While Defecating**
- **The Area Around The Anus May Be Red And Sore.**

Internal Hemorrhoids Are Classified Into Four type

- ❑ 1 - There Are Small Inflammations, Usually Inside The Lining Of The Anus. They Are Not Visible
- ❑ 2 - Larger Than type 1 Hemorrhoids, But Also Inside The Anus. When Passing A Stool, They May Get Pushed Out, But Return Unaided
- ❑ 3 - Often Called 'Prolapsed Hemorrhoids'; These Appear Outside The Anus. The Patient May Feel Them Hanging Out. They Can Be Pushed Back In If The Patient Presses With Their Finger
- ❑ 4 - These Cannot Be Pushed Back In And Need To Be Treated By A Doctor. They Are Large And Stay Outside The Anus All The Time. External Hemorrhoids Are Called Perianal Hematoma. These Are Small Lumps That Are Located On The Outside Edge Of The Anus. They Are Very Itchy And Can Be Painful If A Blood Clot Forms Inside (Thrombosed External Hemorrhoid). Thrombosed External Hemorrhoid Requires Medical Treatment Straight Away.

Below we highlight some common stool samples, identifying the type of stool that is healthy and those that are less healthy.



Hard, separated lumps. Like pebbles. Hard to pass
Meaning: Constipation



Lumpy. Resembling a nut covered candy bar
Meaning: Constipation



Compact banana shape with cracks on surface
Meaning: Healthy GI Tract



Long banana shape. Smooth and soft
Meaning: Ideal. Healthy GI Tract



Soft blobs with distinct edges or borders
Meaning: Less substance. More liquid. Urgency

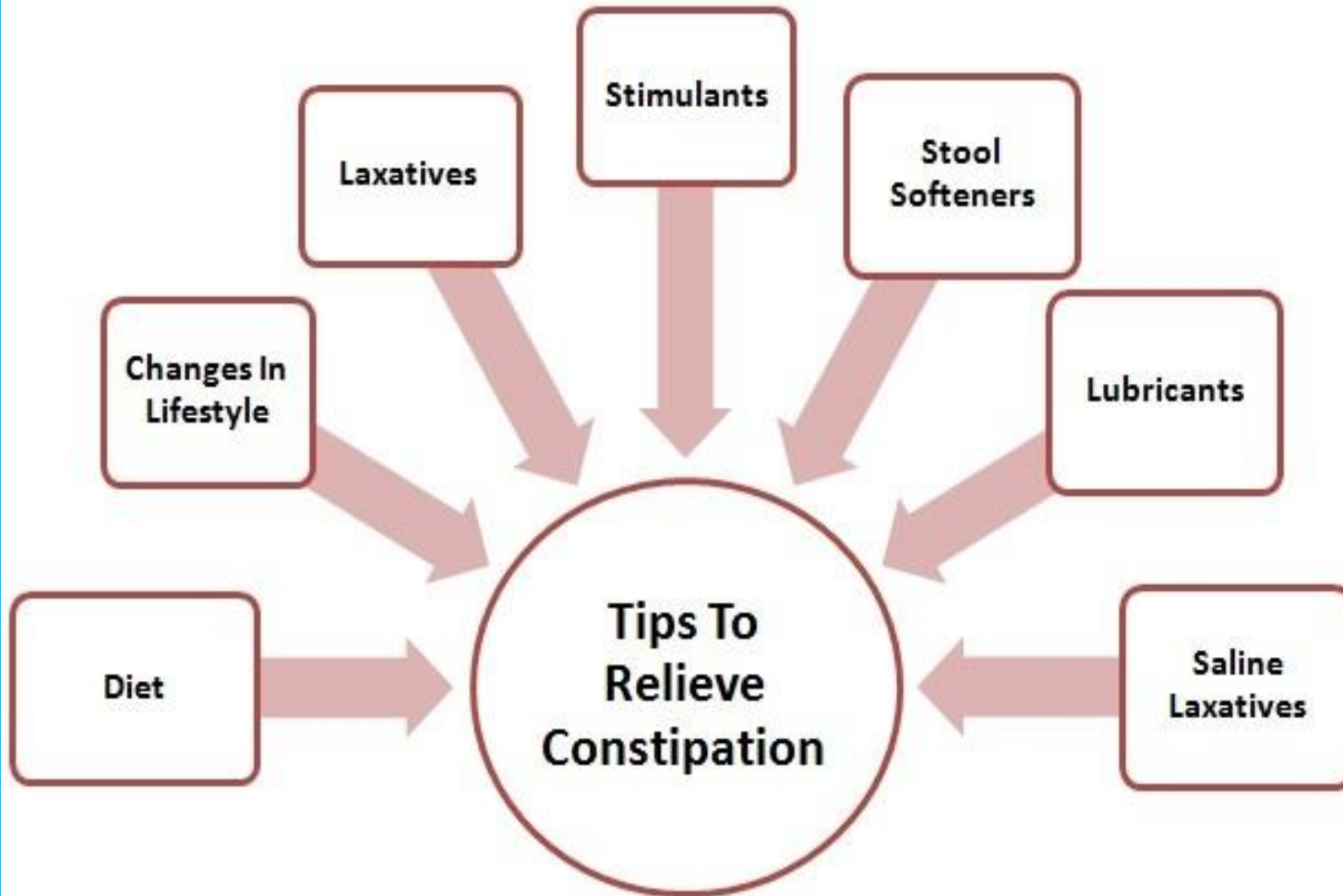


Fluffy pieces with ragged edges. Mushy
Meaning: Diarrhea. Urgency



Watery. No solid pieces. Completely liquid
Meaning: Full blown diarrhea. Urgency to expel

How to take care



How To Take Care



Eat More High Fiber food



Don't Eat Junk Food



Drink More Water



Go For Walk Daily



Take Curd & Buttermilk In Your Daily Meal



Avoid Obesity

Also Available

PYNIIL™

CAPSULES

Enriched with balanced formula



PYNIL™

OINTMENT



30 gm Eco Pack With
FREE Applicator inside.



For the use of regd. Medical practitioner only

Thank you